

Opportunity 4

LA36 – Flexible Lean & Agile Automation of manual Linear Actuator assembly cell

MFJ / January 2023

LA36 Linear Actuators

The actuator LA36 is one of the most solid and powerful LINAK® actuators, designed to operate under extreme conditions.

The LA36 is a maintenance-free product with a long service life and a high IP degree. It is also available with an extra-long service life.

This high-quality actuator offers a very strong alternative to hydraulic solutions.

Max. thrust: 6,800 N

Max. speed: 168 mm/s

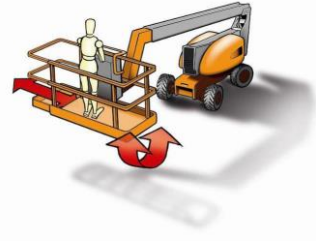
Stroke length: 100-1200 mm

ATEX/IECEX approved

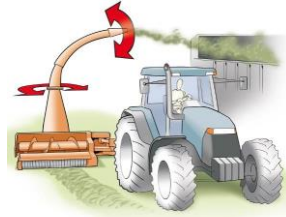


The LA36 is part of the IC Integrated Controller™ range and comes with a variety of industrial and mobile interfaces, allowing you to easily integrate intelligent and reliable movement with existing control systems such as the universal LINAK I/O™ interface, LINbus, Modbus, as well as the two CAN bus protocols CAN SAE J1939 and CANopen.

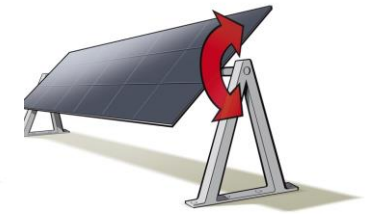
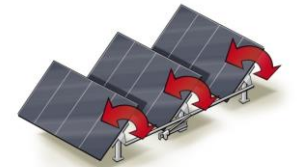
Main application areas for the LA36



Construction



Agriculture



Solar

LA36 manual Linear Actuator assembly cell



Main processes:

1. Assembly of Spindle
2. Assembly of Actuators
3. Test and packaging of Actuators

The LA36 production is a U-cell, manned with approx. 5-6 operators - running 3-shifts operation

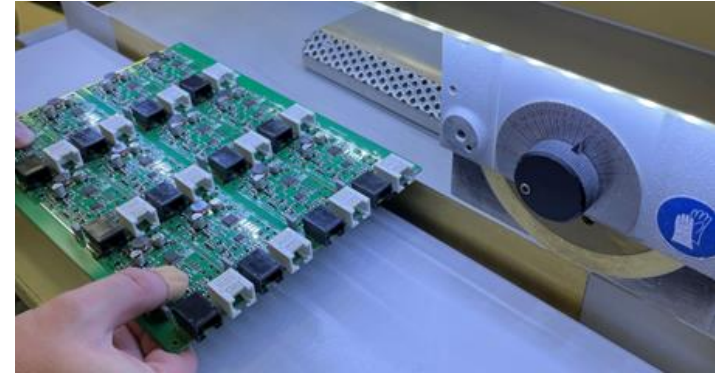
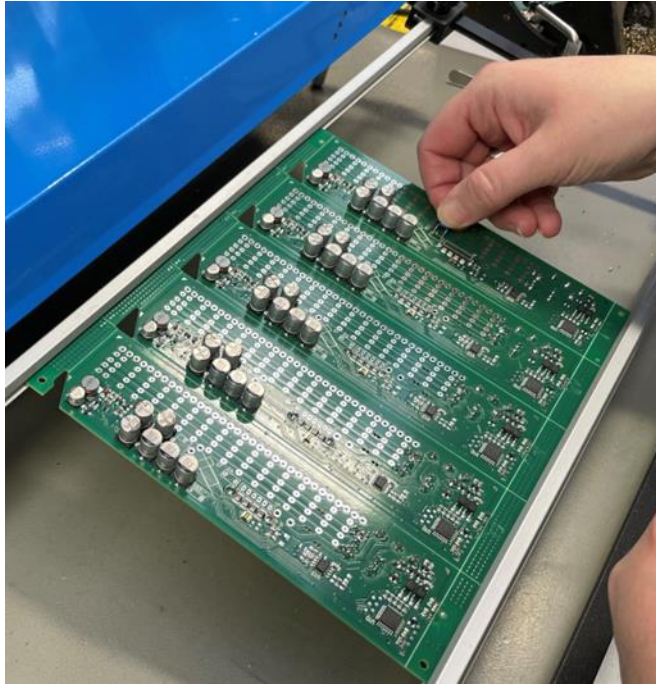
There are 6 workstations

The LA36 Actuator comprises approx. 50-60 components.

InnovationSprint Challenge:

**Identify the most Flexible Lean & Agile
Automation of the manual LA36 Linear Actuator
assembly cell**

Print Feeder - Handloading Area



LINAK[®] 

WE IMPROVE YOUR LIFE